

MUTIK

Kunstlabore

KUNSTLABOR

MUSIK

ZUKUNFTSLABOR



Arrangement: Lea Fink

Camille Saint-Saëns

Danse Macabre op. 40

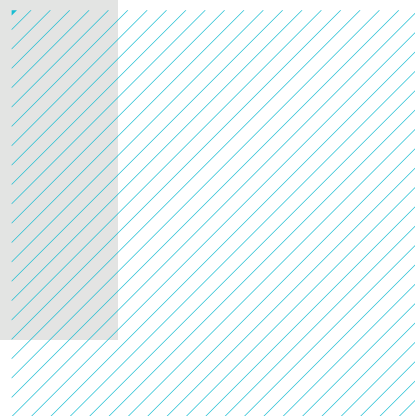
Für Streicherklasse und *Kammerensemble

Partitur gesamt

Partitur Streicherklasse

Einzelstimmen Schüler*innen

Einzelstimmen *Profis



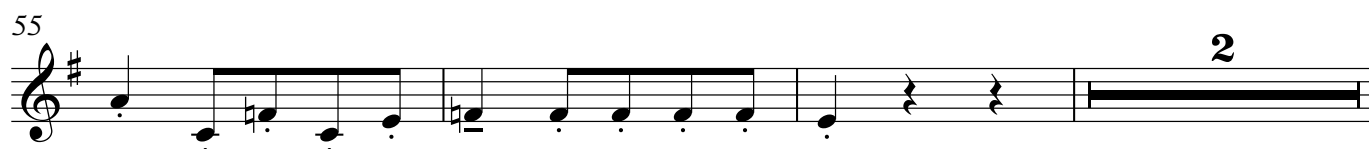
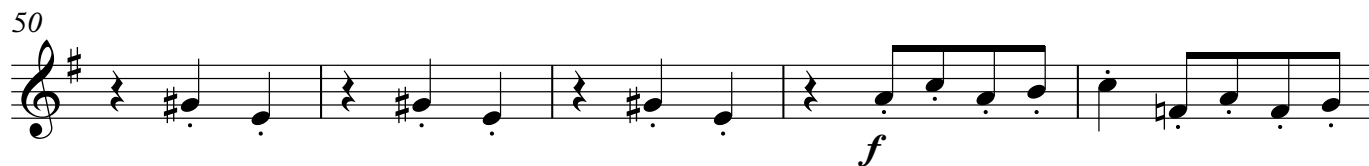
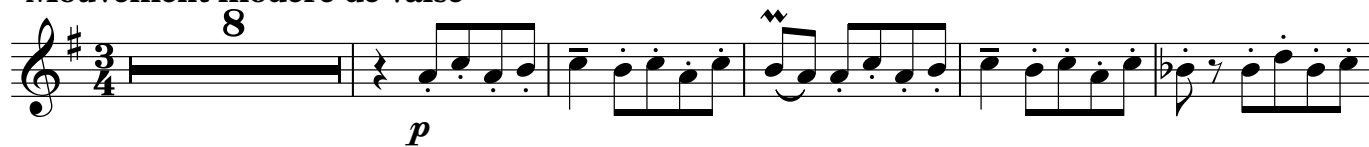
Die mit * gekennzeichneten Stimmen sind für Profi-Musiker*innen vorgesehen.
Dieses Arrangement soll als Ausgangsbasis für Ergänzungen (Instrumentation, weitere Teile des Originals) und Differenzierung (Schwierigkeitsgrad, Gestaltung der Einzelstimmen) dienen.

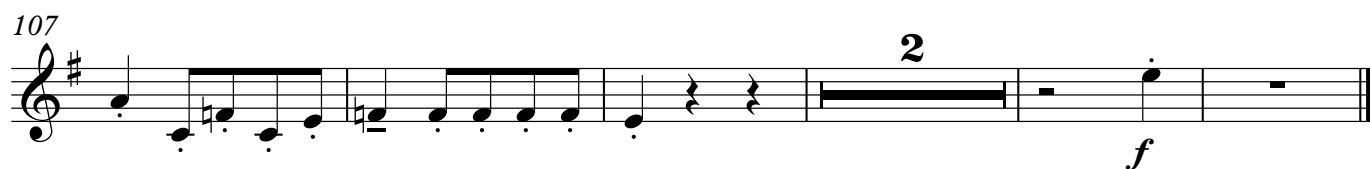
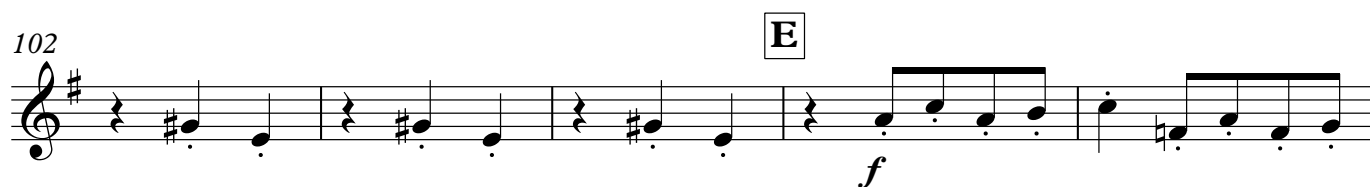
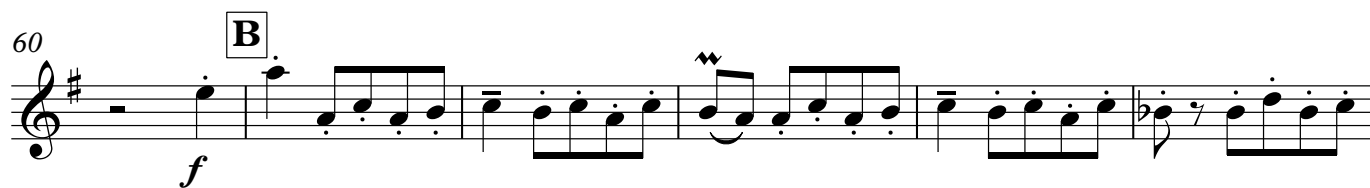
*Klarinette in B

Danse Macabre

für Streicherklasse und *Kammerensemble

Mouvement modéré de Valse





*Horn in F

Danse Macabre

für Streicherklasse und *Kammerensemble

Mouvement modéré de Valse

A

24

largamente

arco

31



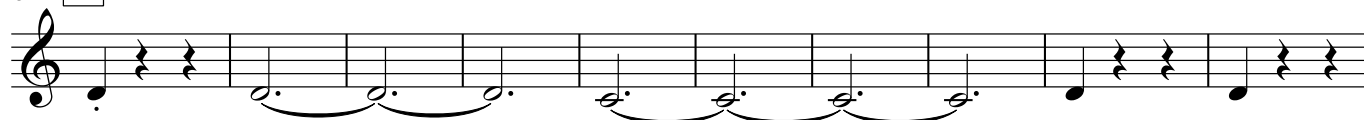
39

15

cresc.

f

61 **B**



71

largamente



78 **C**



86



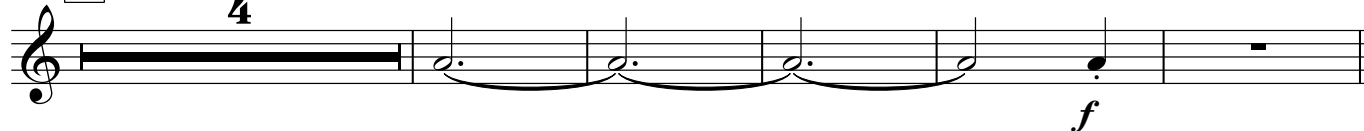
94 **D**

7



105 **E**

4



*Violine 1

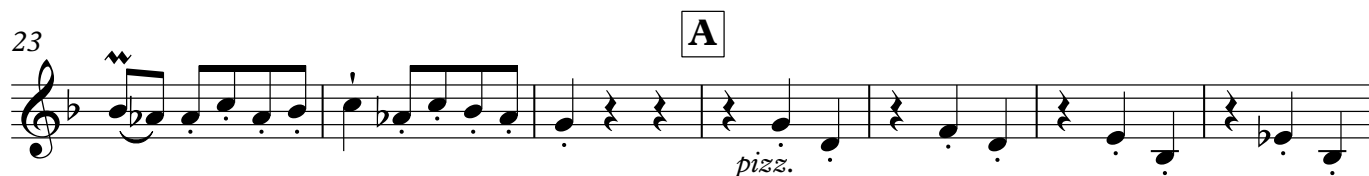
Danse Macabre

für Streicherklasse und *Kammerensemble

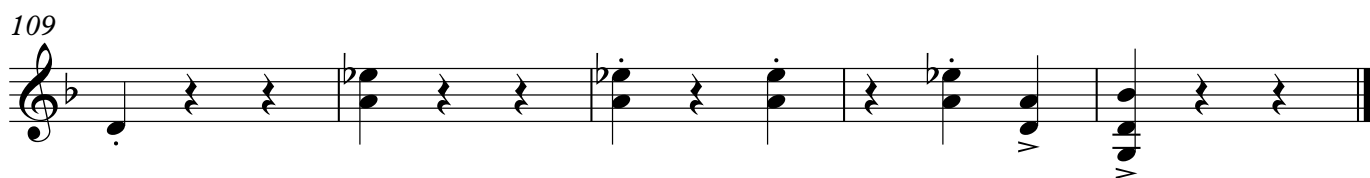
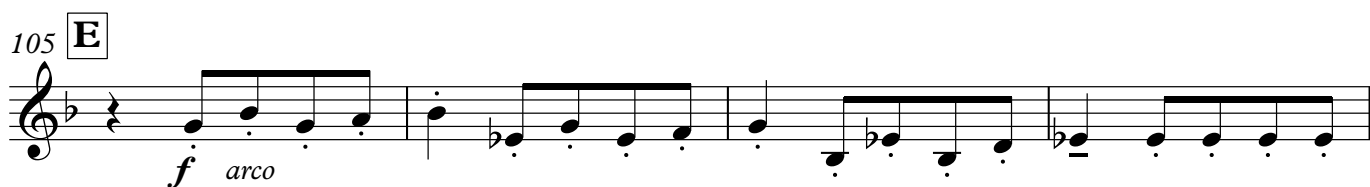
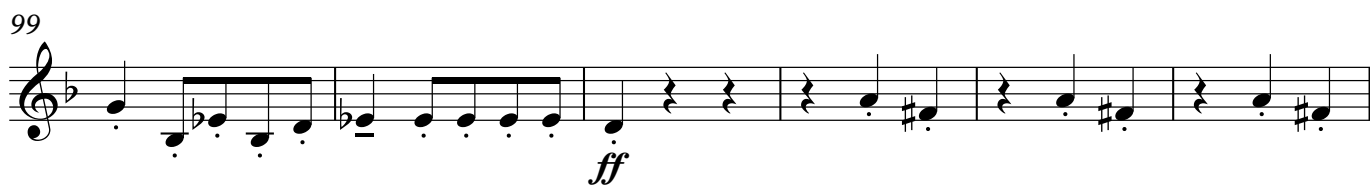
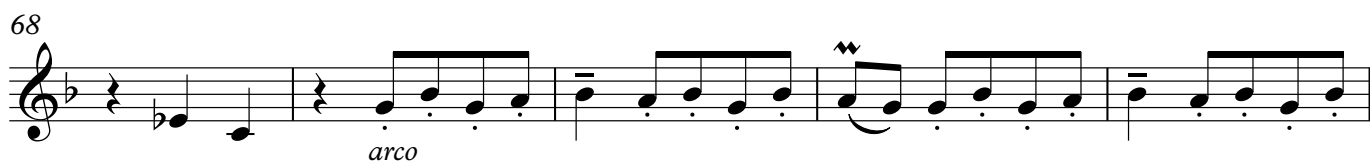
nach Camille Saint-Saëns op. 40
(1835 - 1921)

Arrangement: Lea Fink

Mouvement modéré de Valse



V.S.



*Violine 2

Danse Macabre

für Streicherklasse und *Kammerensemble

nach Camille Saint-Saëns op. 40
(1835 - 1921)

Mouvement modéré de Valse

Arrangement: Lea Fink

First staff of music (Measures 1-8):

- Measure 1: Rest (half note).
- Measure 2: Quarter note G₂ (f).
- Measure 3: Rest (half note).
- Measure 4: Quarter note G₂ (f).
- Measure 5: Quarter note G₂ (f).
- Measure 6: Quarter note G₂ (f).
- Measure 7: Quarter note G₂ (f).
- Measure 8: Quarter note G₂ (f).

10

18

26 | **A**

34

42

49

The musical notation for the 'arco' section is written on a single staff in 3/4 time. It begins with a treble clef and a key signature of one flat (B-flat). The melody consists of eighth and quarter notes, with some notes beamed together. There are several accidentals (sharps and flats) throughout the piece. The word 'arco' is written below the staff at the beginning of the section.

55

61 **B**

V.S.

69



77

C



85



93

D

*arco**pizz.*

99

*arco*

105 E



109



*Viola

Danse Macabre

für Streicherklasse und *Kammerensemble

Mouvement modéré de Valse



60



68



76



84



92



98



105



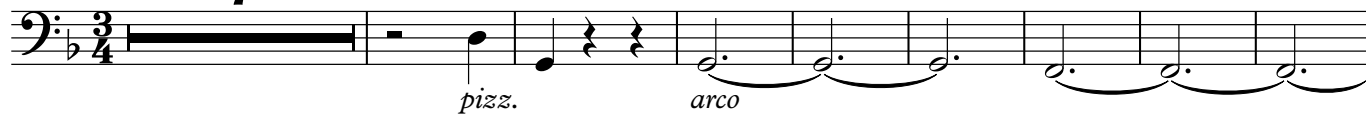
*Violoncello

Danse Macabre

für Streicherklasse und *Kammerensemble

Mouvement modéré de Valse

7



16



24

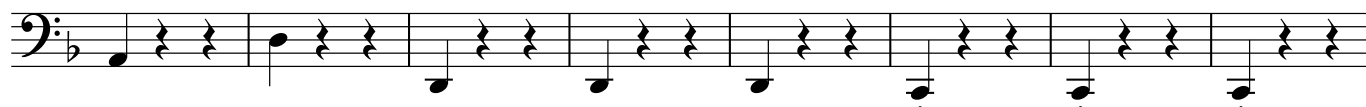
A



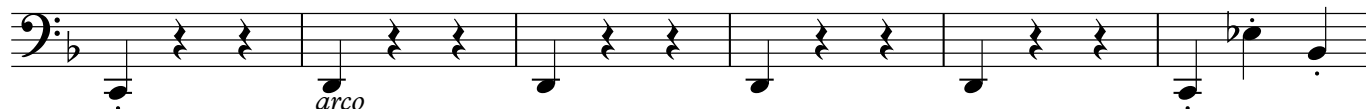
32



40



48



54

2



60 **B**

f *pizz.*

68

pizz.

76 **C**

84

92 **D**

arco

99

arco

105 **E**

col legno *f*